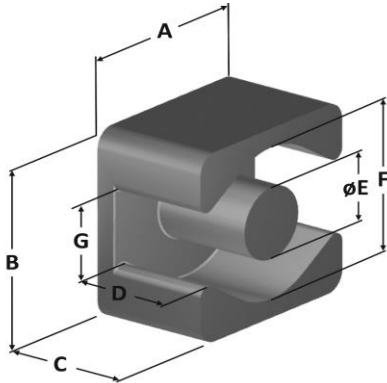




Part Number: **HC065A19A-66000**

Revision 20200506 - Generated 2020-May-06



A	6.48 ± 0.15 mm	0.255 ± 0.006 in											
B	6.48 ± 0.15 mm	0.255 ± 0.006 in											
C	1.91 ± 0.10 mm	0.075 ± 0.004 in											
D	0.90 mm (min.)	0.036 in (min.)											
E	2.11 ± 0.10 mm	0.083 ± 0.004 in											
F	4.85 mm (min.)	0.191 in (min.)											
G	2.29 mm (nom.)	0.090 in (nom.)											
Mass	(approximate)	0.37 grams/half											
Magnetic Dimensions	when matched with IC (thickness=0.90 mm. nom.)												
	A _e - Eff. Mag. Cross Section	0.0939 cm ²											
	L _e - Eff. Mag. Path Length	0.943 cm											
	V _e - Eff. Core Volume	0.0979 cm ³											
	WA - Min. Eff. Window Area	0.0132 cm ²											
	sa - Surface Area	1.57 cm ²											
	mlt - mean length per turn	1.12 cm											
Core Loss	Core Loss(mW/cm ³)= $\frac{f}{a} + \frac{b}{B_{pk}^{2.3}} + \frac{c}{B_{pk}^{1.65}} + d \cdot B_{pk}^2 \cdot f^2$												
	where B _{pk} expressed in gauss, f expressed in hertz, and: a=1.72E+10, b=4.96E+07, c=1.23E+06, d=1.73E-14												
	B _{pk}	140 G											
	frequency	100 kHz											
	Core Loss (nominal)	17 mW/cm ³											
Core Loss (maximum)	20 mW/cm ³												
DC Saturation	$\% \mu_i = \frac{1}{a + b \cdot H^c} + d$												
	where H expressed in oersteds, and: a=1.00E-02, b=1.23E-05, c=1.48, d=0.00												
	H _{DC}	50 Oe											
	Percent Initial Perm.(nom.)	71.0%											
Percent Initial Perm.(min.)	65.1%												
Coating/Pkg	Coating Type:	Per UL Card File #E140098(S), Black, Outer Surface only											
	Voltage Breakdown (min.)	200Vrms, 60Hz											
	Limit	3 mA, 5 s											
	Package Quantity	14,000 Halves/Box											
Winding Table	Wire Size	AWG	30	32	34	36	38	40	42	44	#N/A	#N/A	#N/A
		mm	0.250	0.200	0.160	0.125	0.100	0.080	0.063	0.050	#N/A	#N/A	#N/A
	Full Winding	Turns	9	13	21	32	50	77	120	185	#N/A	#N/A	#N/A
		Rdc(Ω)	34.0 m	78.2 m	200.9 m	486.8 m	1.2	3.0	7.3	18.0	#N/A	#N/A	#N/A

