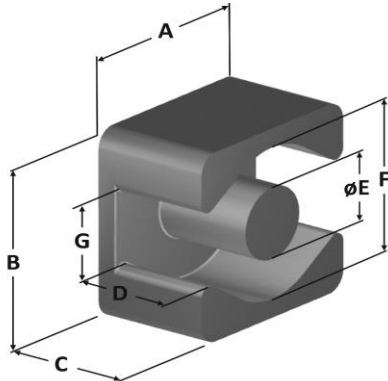




**Part Number:** **HC045A11B-66000**  
 Revision 20200506 - Generated 2020-May-06



<b>A</b>	4.50 ± 0.15 mm	0.177 ± 0.006 in											
<b>B</b>	4.50 ± 0.15 mm	0.177 ± 0.006 in											
<b>C</b>	1.13 ± 0.10 mm	0.044 ± 0.004 in											
<b>D</b>	0.40 mm (min.)	0.016 in (min.)											
<b>E</b>	1.68 ± 0.10 mm	0.066 ± 0.004 in											
<b>F</b>	3.50 mm (min.)	0.138 in (min.)											
<b>G</b>	1.68 mm (nom.)	0.066 in (nom.)											
<b>Mass</b>	(approximate)	0.11 grams/half											
<b>Magnetic Dimensions</b>	when matched with IC (thickness=0.62 mm. nom.)												
	A <sub>e</sub> - Eff. Mag. Cross Section	0.0451 cm <sup>2</sup>											
	L <sub>e</sub> - Eff. Mag. Path Length	0.616 cm											
	V <sub>e</sub> - Eff. Core Volume	0.0305 cm <sup>3</sup>											
	WA - Min. Eff. Window Area	0.00431 cm <sup>2</sup>											
	sa - Surface Area	0.720 cm <sup>2</sup>											
	mlt - mean length per turn	0.837 cm											
<b>Core Loss</b>	$\text{Core Loss (mW/cm}^3\text{)} = \frac{f}{\frac{a}{B_{pk}^3} + \frac{b}{B_{pk}^{2.3}} + \frac{c}{B_{pk}^{1.65}}} + d \cdot B_{pk}^2 \cdot f^2$												
	where B <sub>pk</sub> expressed in gauss, f expressed in hertz, and: a=1.72E+10, b=4.96E+07, c=1.23E+06, d=1.73E-14												
	B <sub>pk</sub>	140 G											
	frequency	100 kHz											
	Core Loss (nominal)	17 mW/cm <sup>3</sup>											
	Core Loss (maximum)	20 mW/cm <sup>3</sup>											
<b>DC Saturation</b>	$\% \mu_i = \frac{1}{a + b \cdot H^c} + d$												
	where H expressed in oersteds, and: a=1.00E-02, b=1.23E-05, c=1.48, d=0.00												
	H <sub>DC</sub>	50 Oe											
	Percent Initial Perm.(nom.)	71.0%											
	Percent Initial Perm.(min.)	65.1%											
<b>Coating/Pkg</b>	Coating Type:	Per UL Card File #E140098(S), Black, Outer Surface only											
	Voltage Breakdown (min.)	200Vrms, 60Hz											
	Limit	3 mA, 5 s											
	Package Quantity	30,000 Halves/Box											
<b>Winding Table</b>	<b>Wire Size</b>	AWG	34	36	38	40	42	44	#N/A	#N/A	#N/A	#N/A	#N/A
		mm	0.160	0.125	0.100	0.080	0.063	0.050	#N/A	#N/A	#N/A	#N/A	#N/A
	<b>Full Winding</b>	Turns	7	11	16	25	39	60	#N/A	#N/A	#N/A	#N/A	#N/A
		Rdc(Ω)	50.2 m	125.4 m	290.0 m	720.8 m	1.8	4.4	#N/A	#N/A	#N/A	#N/A	#N/A

