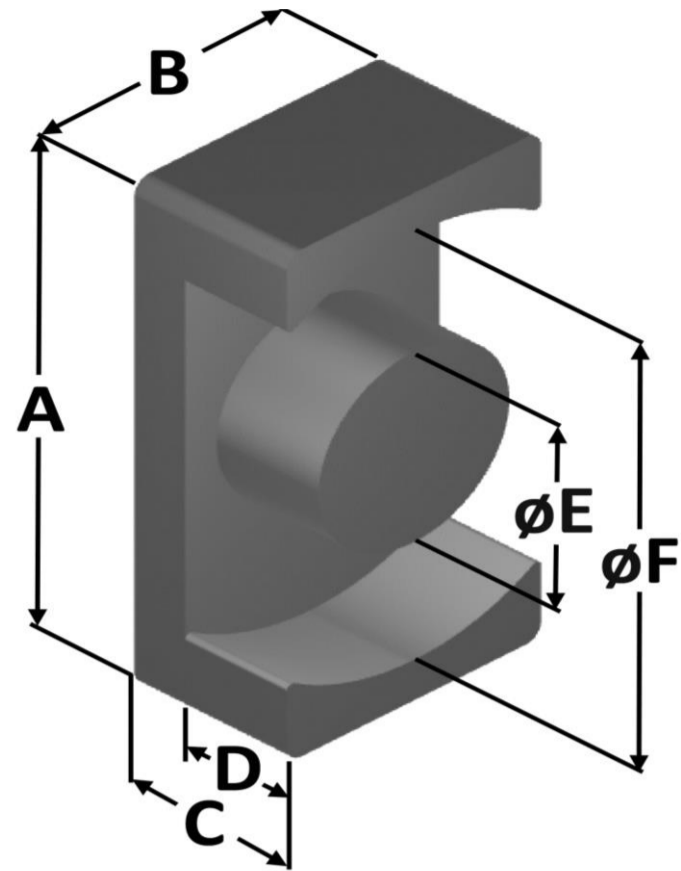


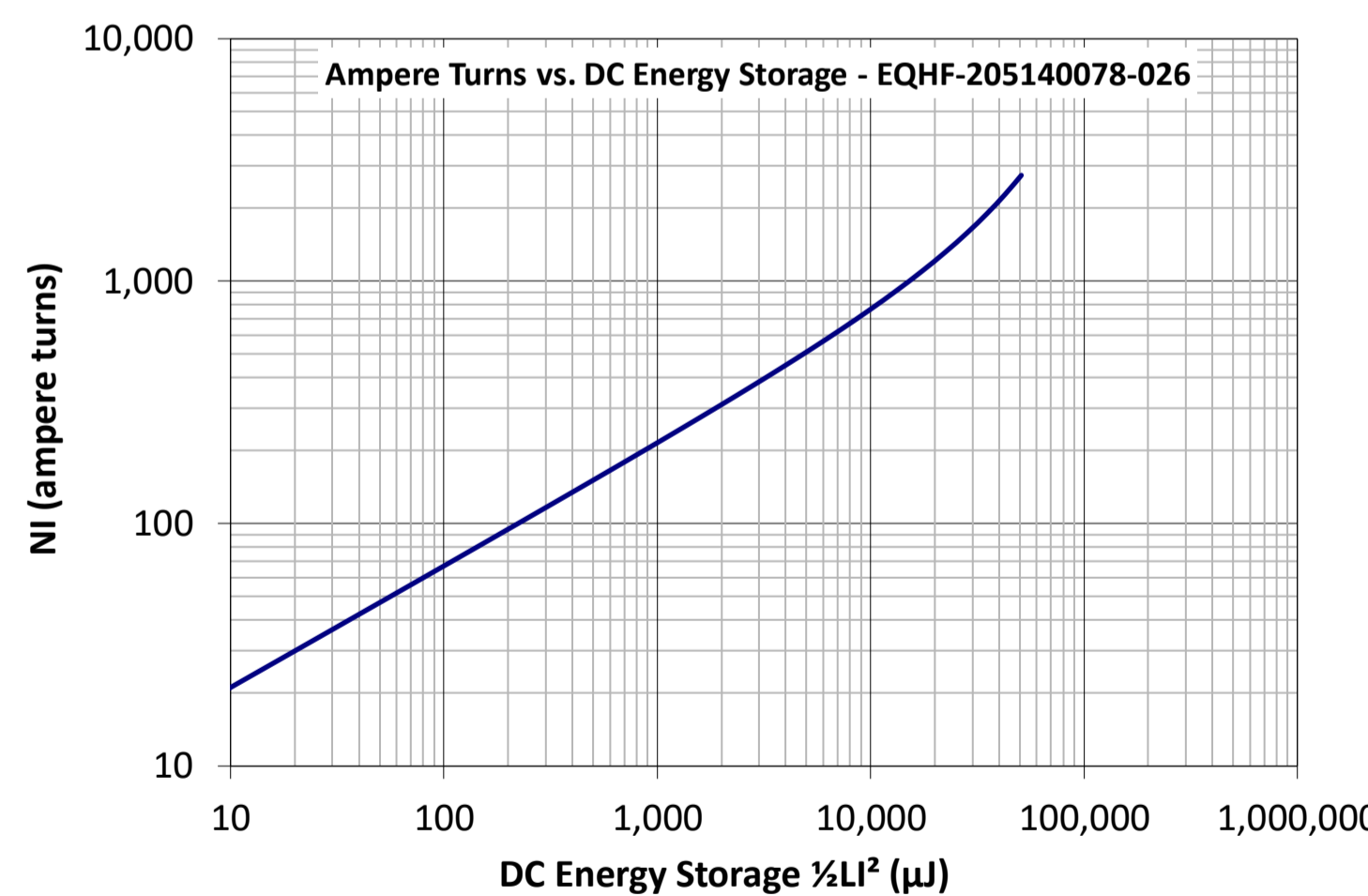
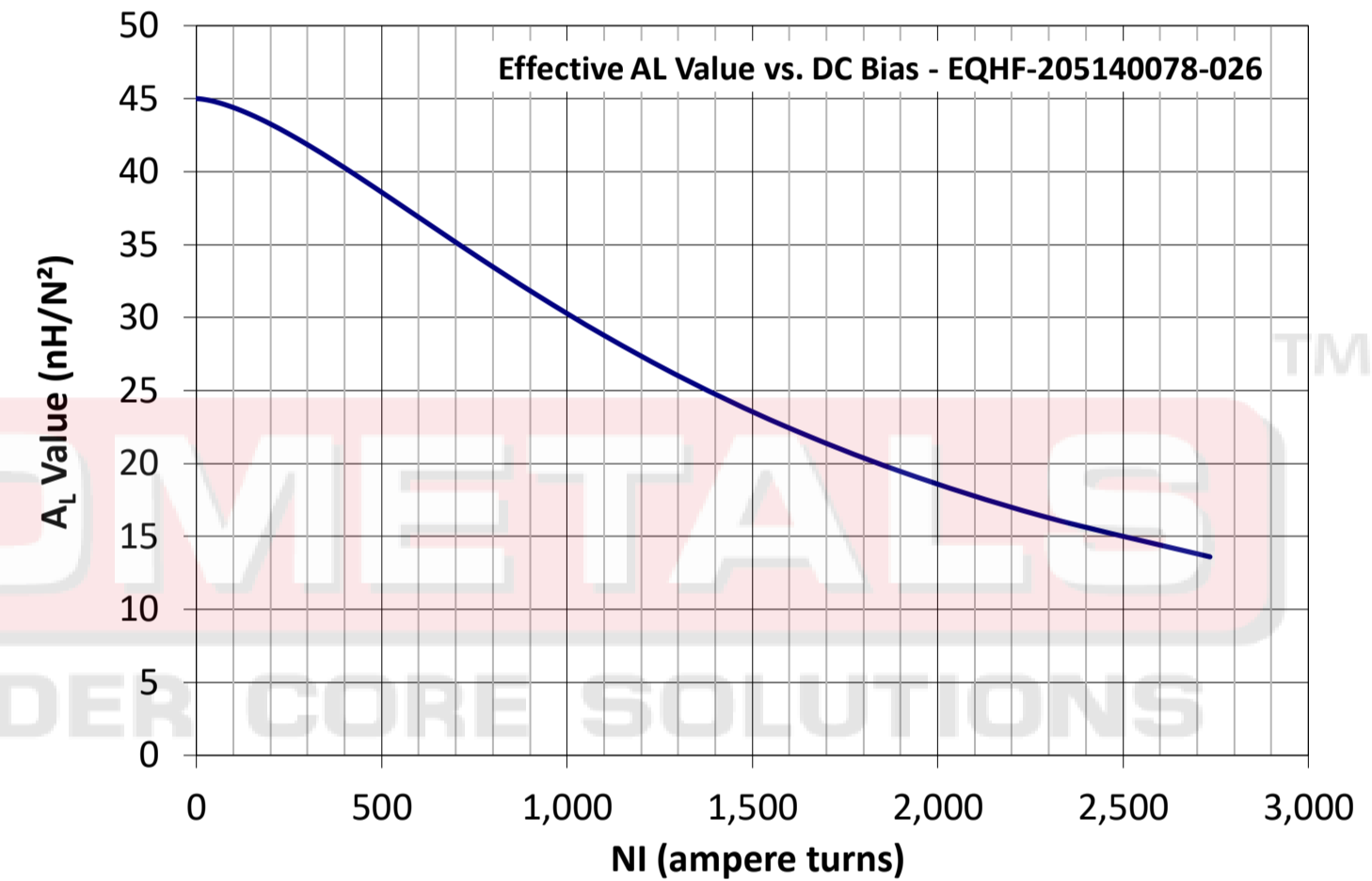
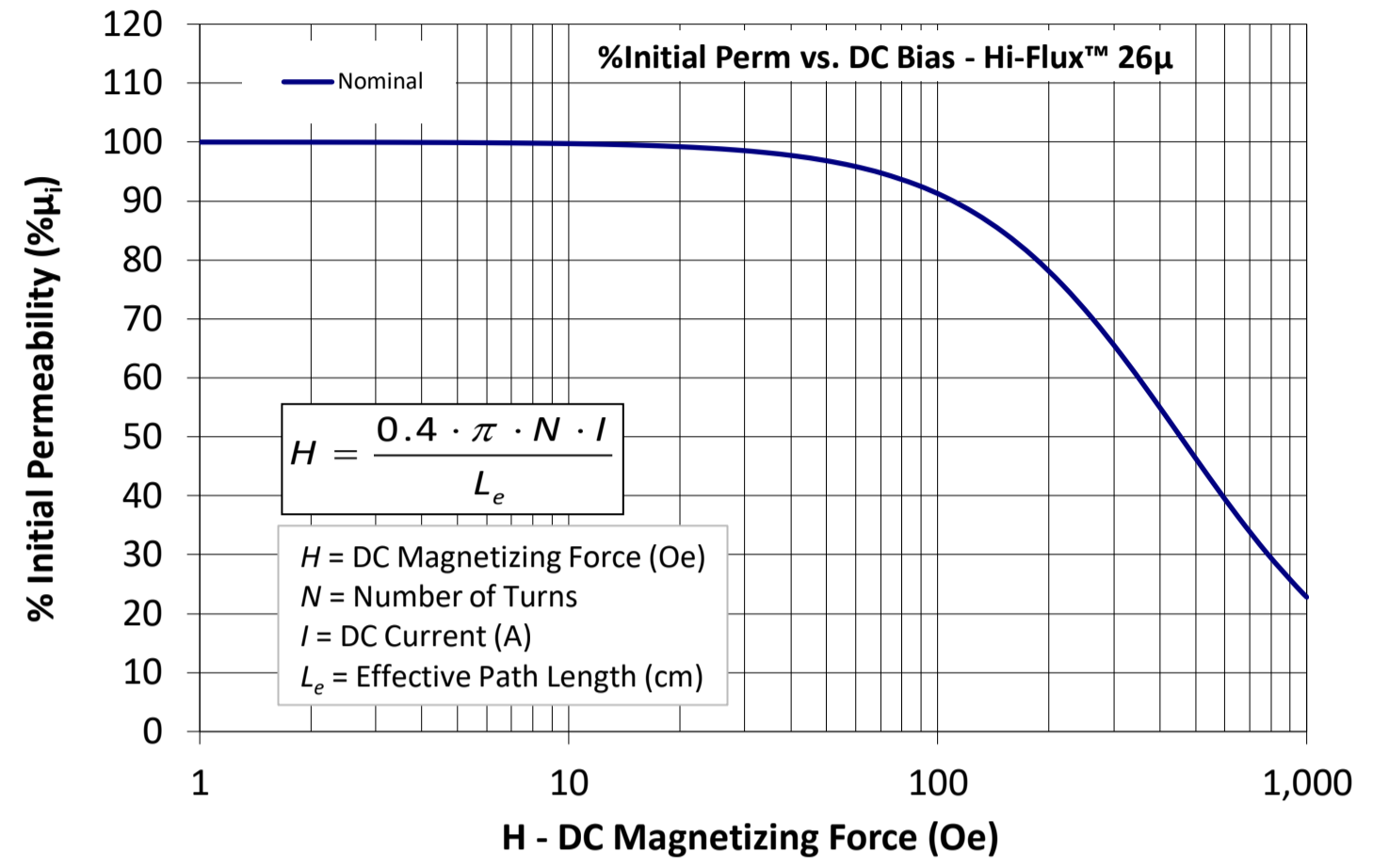
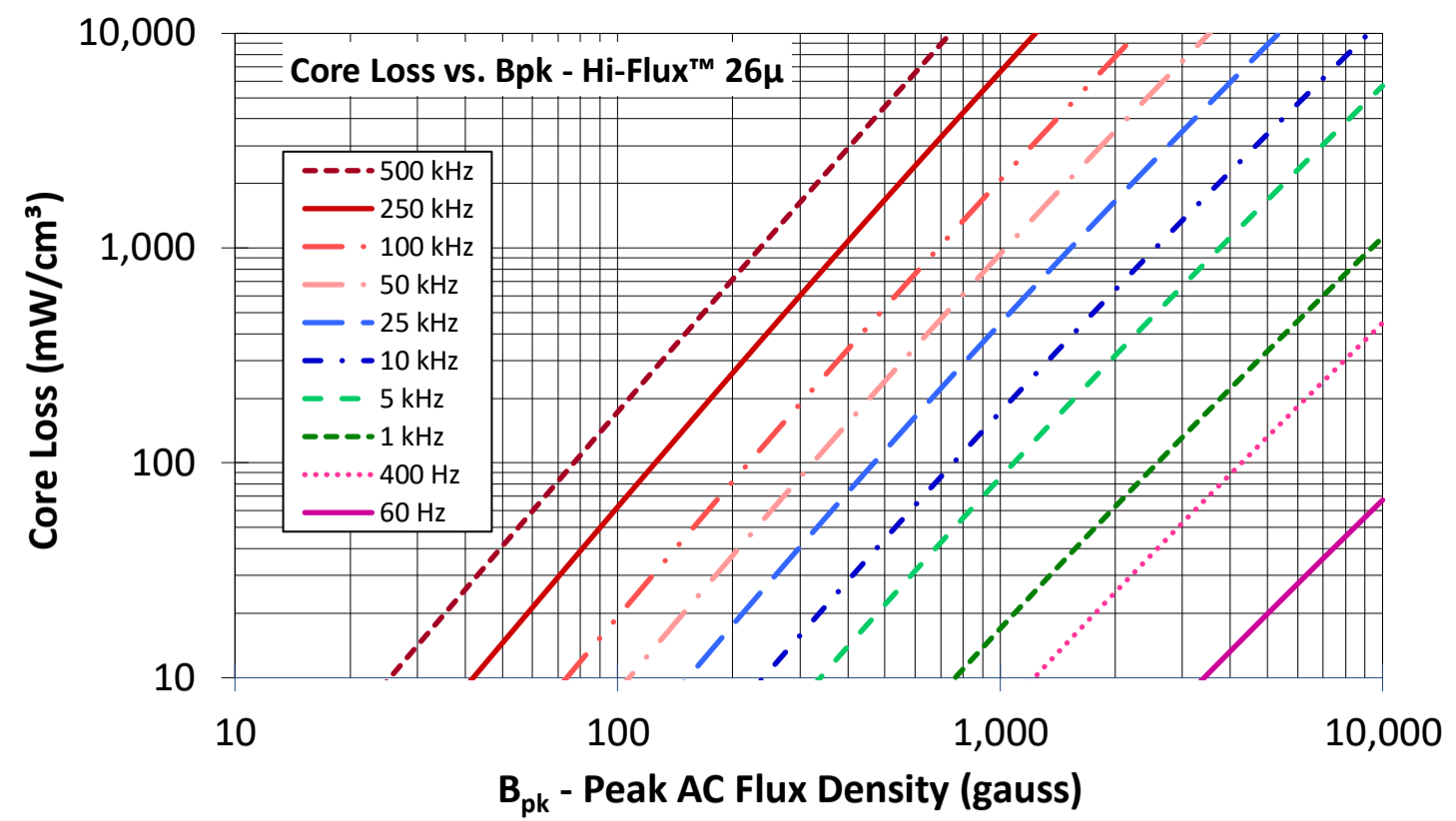


**Part Number:** EQHF-205140078-026

Revision 20201124 - Generated 2020-Nov-24



<b>A</b>	20.5 ± 0.30 mm	0.807 ± 0.012 in											
<b>B</b>	14 ± 0.20 mm	0.551 ± 0.008 in											
<b>C</b>	7.8 ± 0.20 mm	0.307 ± 0.008 in											
<b>D</b>	5.1 mm (min.)	0.201 in (min.)											
<b>E</b>	8.8 ± 0.20 mm	0.346 ± 0.008 in											
<b>F</b>	17.8 mm (min.)	0.701 in (min.)											
<b>Mass</b>	(approximate)	7.9 grams/half											
<b>Magnetic Dimensions</b>	A <sub>e</sub> - Eff. Mag. Cross Section	0.608 cm <sup>2</sup>											
	L <sub>e</sub> - Eff. Mag. Path Length	4.40 cm											
	V <sub>e</sub> - Eff. Core Volume	2.68 cm <sup>3</sup>											
	WA - Min. Eff. Window Area	0.449 cm <sup>2</sup>											
	sa - Surface Area	17.2 cm <sup>2</sup>											
	mlt - mean length per turn	4.18 cm											
<b>Inductance</b>	μ <sub>i</sub> (reference)	26											
	A <sub>L</sub> value (nominal)	45 nH/N <sup>2</sup>											
	Test Winding	N=20, #26 AWG											
	Frequency	10 kHz											
	Voltage on Agilent 4284A	0.054 V											
	A <sub>L</sub> tolerance	±12%											
<b>Core Loss</b>	$\text{Core Loss (mW/cm}^3\text{)} = \frac{f}{\frac{a}{B_{pk}^3} + \frac{b}{B_{pk}^{2.3}} + \frac{c}{B_{pk}^{1.65}}} + d \cdot B_{pk}^2 \cdot f^2$												
	where B <sub>pk</sub> expressed in gauss, f expressed in hertz, and: a=1.00E+06, b=1.99E+08, c=3.06E+06, d=3.84E-14												
	B <sub>pk</sub>	300 G											
	frequency	100 kHz											
	Core Loss (nominal)	189 mW/cm <sup>3</sup>											
Core Loss (maximum)	217 mW/cm <sup>3</sup>												
<b>DC Saturation</b>	$\% \mu_i = \frac{1}{a + b \cdot H^c} + d$												
	where H expressed in oersteds, and: a=0.01, b=7.68E-07, c=1.55, d=0.00												
	H <sub>DC</sub>	200 Oe											
	Percent Initial Perm(nom.)	78.1%											
Percent Initial Perm(min.)	72.9%												
<b>Coating/Pkg</b>	Coating Type:	None											
	Voltage Breakdown (min.)	N/A											
	Limit	N/A											
	Package Quantity	1,300 Halves/Box											
<b>Winding Table</b>	<b>Wire Size</b>	AWG	16	18	20	22	24	26	28	30	32	34	36
		mm	1.250	1.000	0.800	0.630	0.500	0.400	0.315	0.250	0.200	0.160	0.125
	<b>Full Winding</b>	Turns	14	21	33	51	80	123	191	295	457	707	1,095
		Rdc(Ω)	7.7 m	18.4 m	45.9 m	112.8 m	281.3 m	687.8 m	1.7	4.2	10.3	25.3	62.3



**Handling and Storage:** Cores should be stored in the original unopened packaging between -10°C and +50°C and less than 60% relative humidity. After the original packaging is opened, the cores should be stored between -8°C and +25°C less than 30% relative humidity. Gloves should be used when handling uncoated cores. The cores should also be sheltered from rain, moisture, salt water, salt air, plasters, ashes, sulfur, sulfur dioxide, ammonia sulfates, soils, acids, metals shavings, and solvents.

**Operating Temperature:** Cores can be used continuously at operating temperatures between -60°C and +200°C.

RoHS 2.0, REACH and ISO (TS16949, ISO 9001, ISO 14001) compliant. Statements available for download at [www.micrometalsapc.com](http://www.micrometalsapc.com).