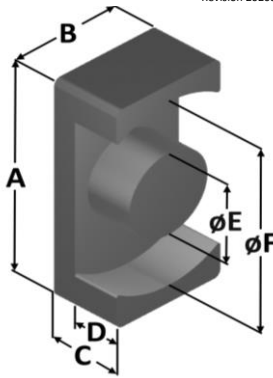




Part Number: **EQFS-205140055-026**

Revision 20200820 - Generated 2020-Aug-20



A	20.5 ± 0.30 mm	0.807 ± 0.012 in
B	14 ± 0.20 mm	0.551 ± 0.008 in
C	5.5 ± 0.20 mm	0.217 ± 0.008 in
D	2.8 mm (min.)	0.110 in (min.)
E	8.8 ± 0.20 mm	0.346 ± 0.008 in
F	17.8 mm (min.)	0.701 in (min.)

Mass	(approximate)	5.8 grams/half
Magnetic Dimensions	A_e - Eff. Mag. Cross Section	0.608 cm ²
	L_e - Eff. Mag. Path Length	3.48 cm
	V_e - Eff. Core Volume	2.12 cm ³
	WA - Min. Eff. Window Area	0.246 cm ²
	sa - Surface Area	13.2 cm ²
	mLt - mean length per turn	4.18 cm

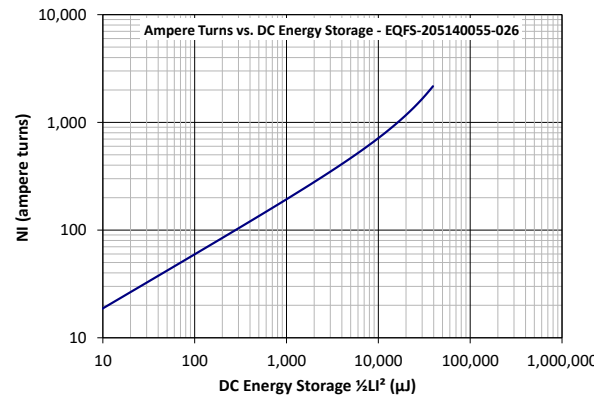
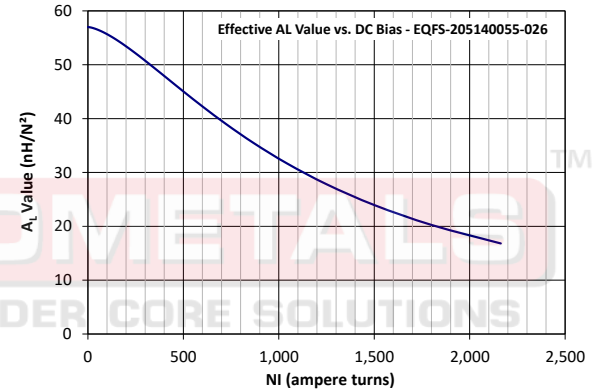
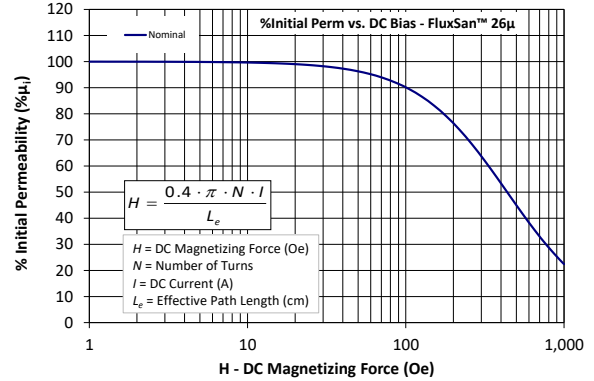
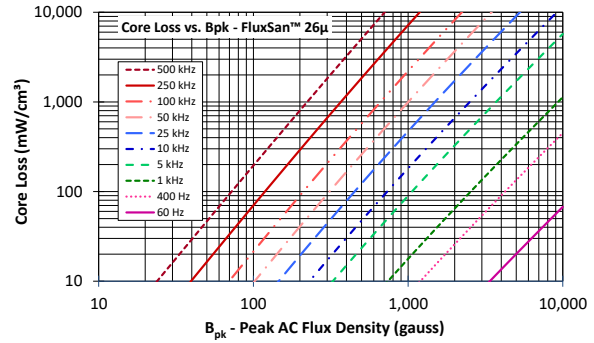
Inductance	μ_i (reference)	26
	A_L value (nominal)	57 nH/N ²
	Test Winding	N=10, #26 AWG
	Frequency	10 kHz
	Voltage on Agilent 4284A	0.027 V
	A_L tolerance	±12%

Core Loss	$\text{Core Loss (mW/cm}^3\text{)} = \frac{f}{\frac{a}{B_{pk}^3} + \frac{b}{B_{pk}^{2.3}} + \frac{c}{B_{pk}^{1.65}}} + d \cdot B_{pk}^2 \cdot f^2$	
	where B_{pk} expressed in gauss, f expressed in hertz, and:	
	$a=1.00E+06$, $b=1.72E+08$, $c=3.11E+06$, $d=4.39E-14$	
	B_{pk}	300 G
	frequency	100 kHz
	Core Loss (nominal)	206 mW/cm ³
	Core Loss (maximum)	237 mW/cm ³

DC Saturation	$\% \mu_i = \frac{1}{a + b \cdot H^c} + d$	
	where H expressed in oersteds, and:	
	$a=0.01$, $b=1.09E-06$, $c=1.50$, $d=0.00$	
	H_{DC}	200 Oe
	Percent Initial Perm.(nom.)	76.4%
	Percent Initial Perm.(min.)	71.1%

Coating/Pkg	Coating Type:	None
	Voltage Breakdown (min.)	N/A
	Limit	N/A
	Package Quantity	1,820 Halves/Box

Winding Table	Wire Size	AWG	20	22	24	26	28	30	32	34	36	38	40
		mm	0.800	0.630	0.500	0.400	0.315	0.250	0.200	0.160	0.125	0.100	0.080
	Full Winding	Turns	18	28	44	68	105	162	251	388	601	930	1,440
	Rdc(Ω)	25.0 m	61.9 m	154.7 m	380.3 m	933.8 m	2.3	5.6	13.9	34.2	84.2	207.2	



Handling and Storage: Cores should be stored in the original unopened packaging between -10°C and +50°C and less than 60% relative humidity. After the original packaging is opened, the cores should be stored between -8°C and +25°C less than 30% relative humidity. Gloves should be used when handling uncoated cores. The cores should also be sheltered from rain, moisture, salt water, salt air, plasters, ashes, sulfur, sulfur dioxide, ammonia sulfates, soils, acids, metals shavings, and solvents.

Operating Temperature: Cores can be used continuously at operating temperatures between -60°C and +200°C.

RoHS 2.0, REACH and ISO (TS16949, ISO 9001, ISO 14001) compliant. Statements available for download at www.micrometalsapc.com.